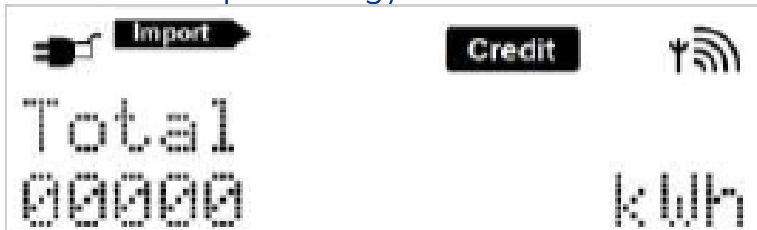


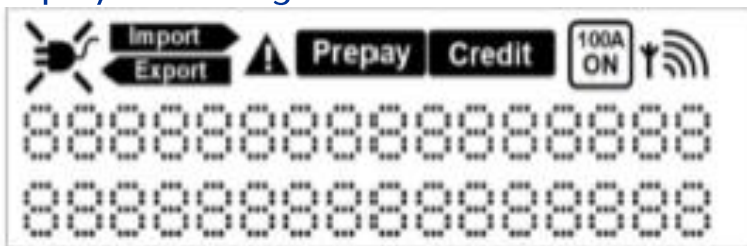
How to read your EMLITE EMA1 Single Phase meter Menu A & B

Menu A

Total active import energy



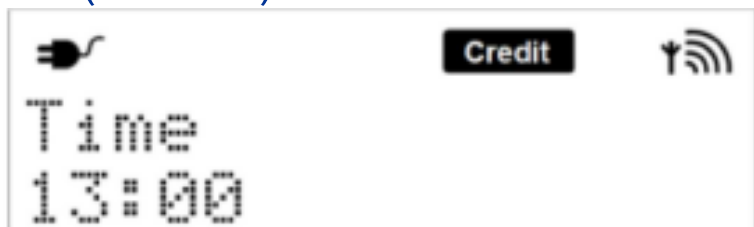
Display test all segments on



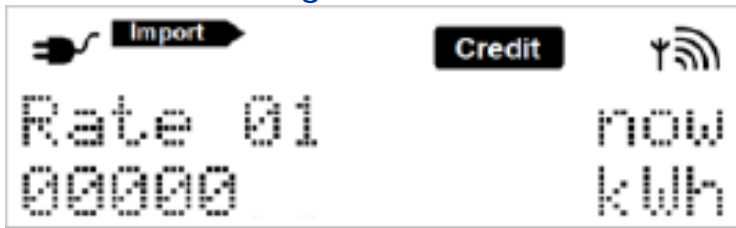
Date



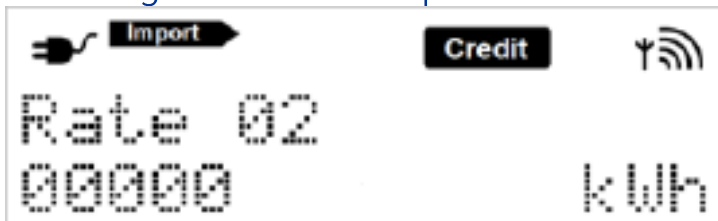
Time (Local time)



Active Rate message

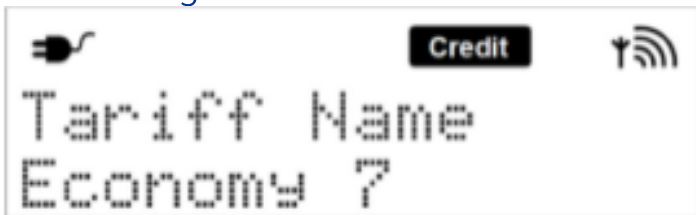


Rated register for active import

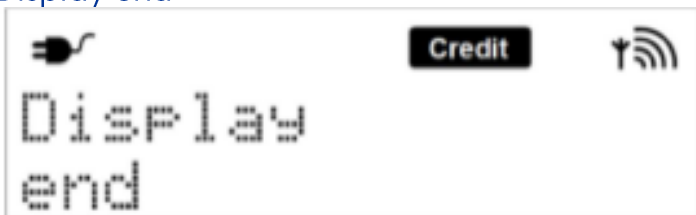


Other rates displayed dependent upon tariff.

Tariff message



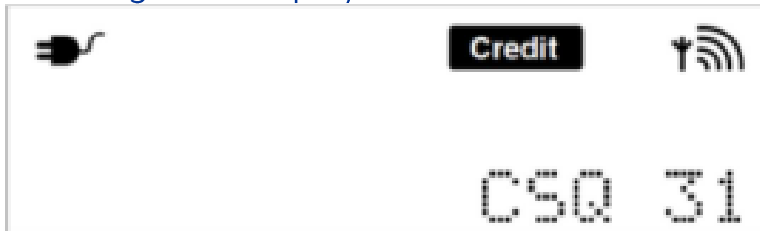
Display end



Menu B

Press Button B twice and hold Button A until CSQ displayed then use Button A to scroll

GSM Diagnostic Display



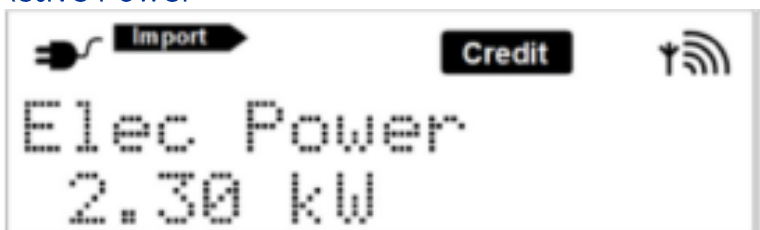
Voltage



Current



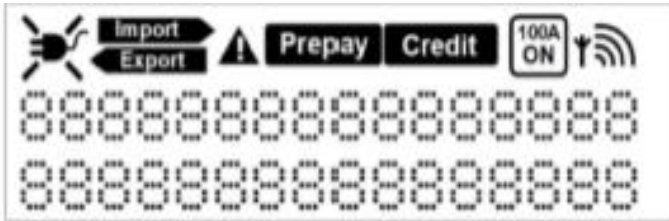
Active Power



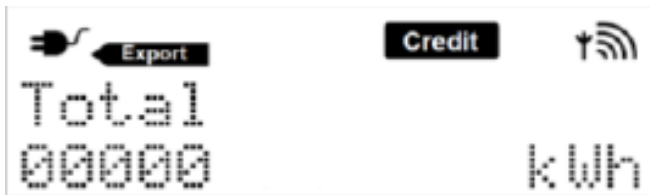
Power Factor



Display test all segments on



Total energy, active export



Total energy, reactive import



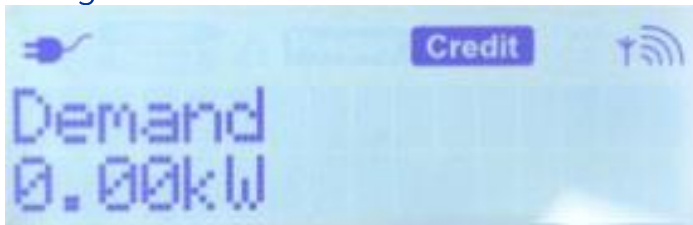
Total energy, reactive export



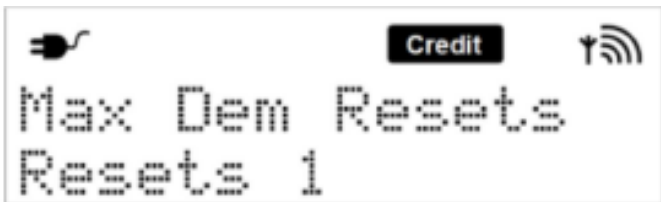
Total energy, reactive export



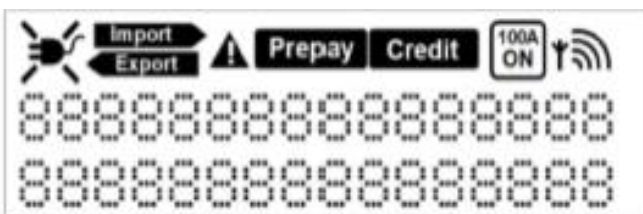
Rising Demand kW



Number of MD resets



Display test (all segments on)



Display End

